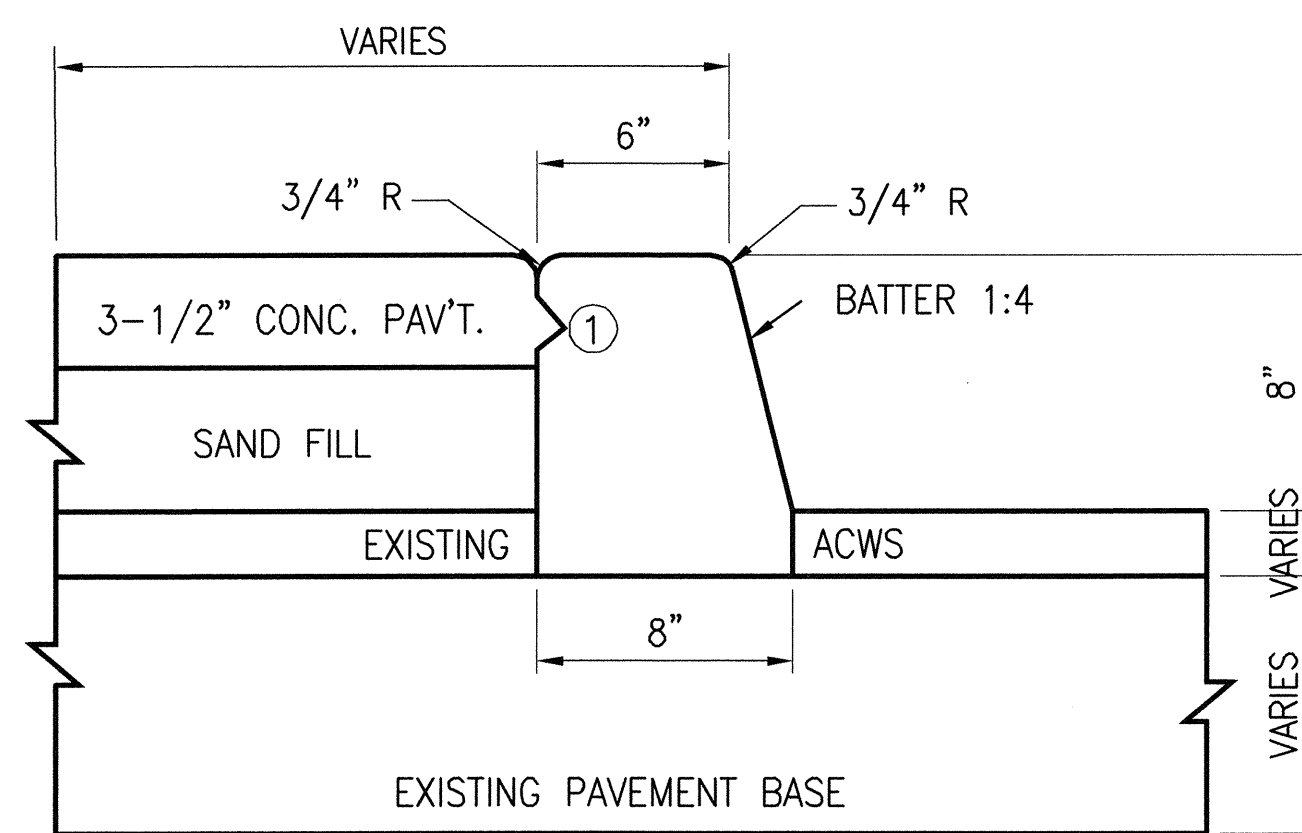
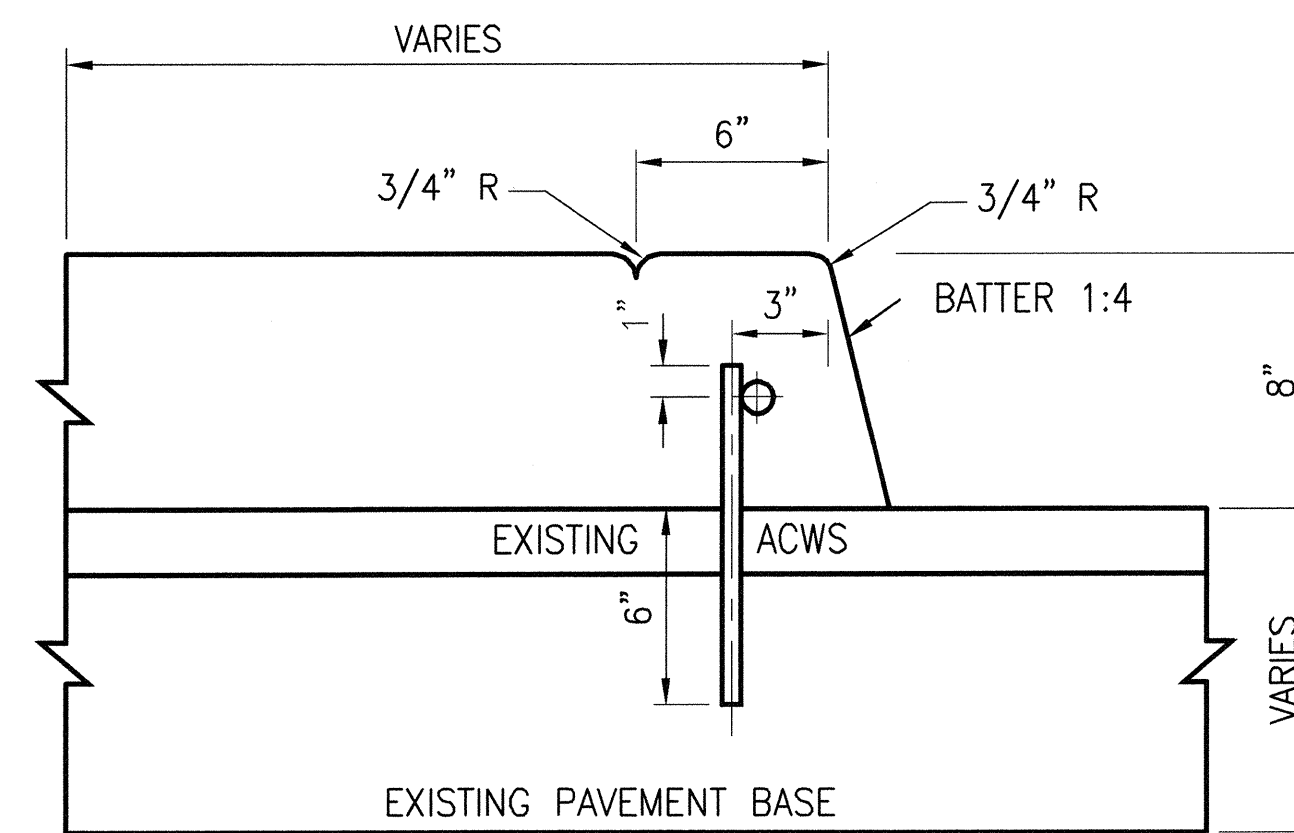


CONCRETE TRAFFIC ISLAND
SPECIAL DOWELED 8-INCH HIGH CONCRETE CURB

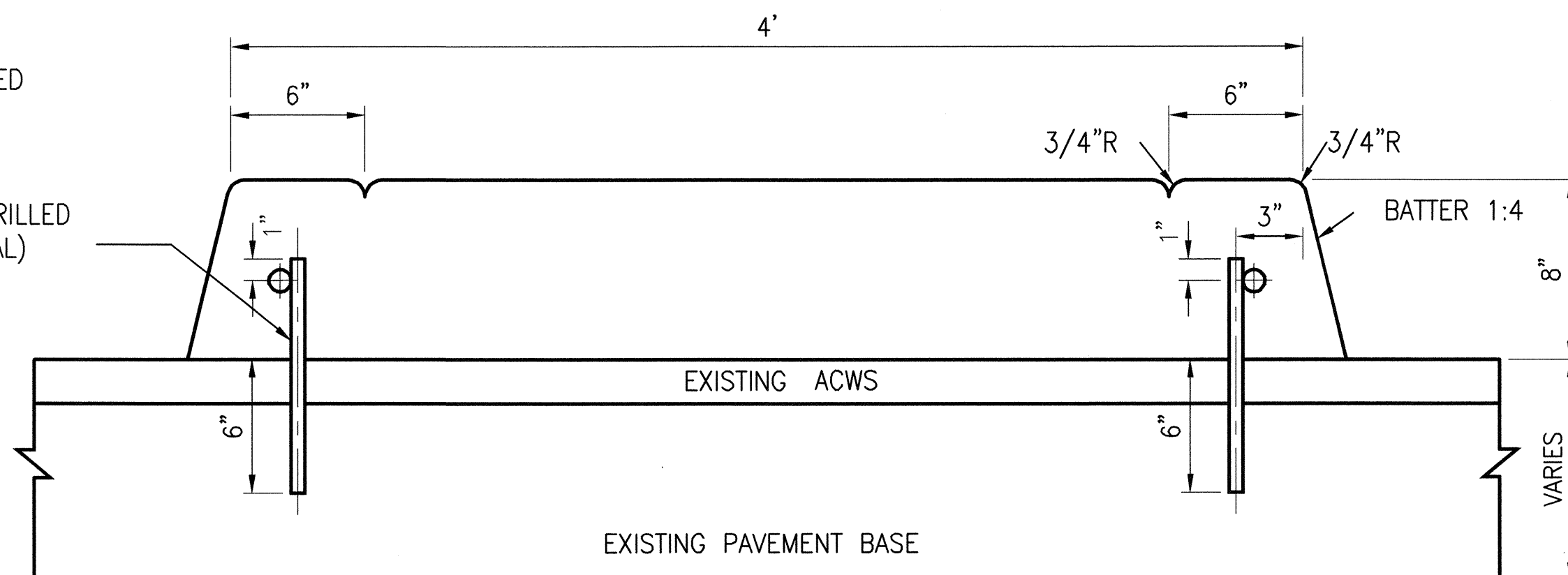


CONCRETE TRAFFIC ISLAND
SPECIAL 8-INCH HIGH CONCRETE CURB

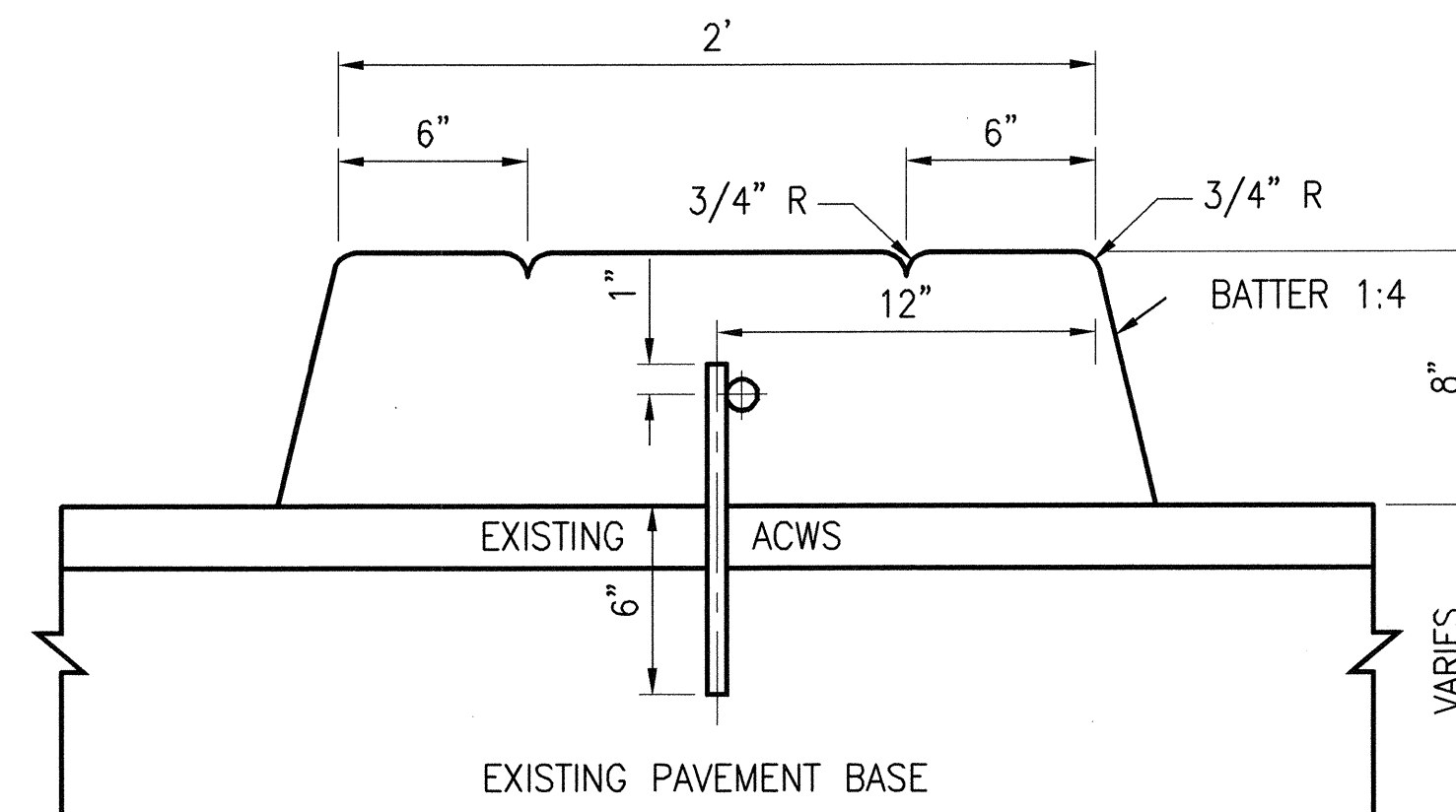


MONOLITHIC CONCRETE
TRAFFIC ISLAND

NO. 4 LONGITUDINAL
REINFORCING BAR WIRED
WITH NO. 14 WIRE TO
NO. 4 REINFORCING
BARS, 10" LONG
GROUTED IN HOLES DRILLED
4" ON CENTER (TYPICAL)



4-FOOT WIDE MONOLITHIC CONCRETE
CENTER ISLAND



2-FOOT WIDE MONOLITHIC CONCRETE
TRAFFIC ISLAND

NOTE AND LEGEND

① LONGITUDINAL JOINTS FOR CONCRETRE CURB
REFER TO STANDARD PLAN NO. 87,173.

ACWS = ASPHALT CONCRETE WEARING SURFACE

EXIST. = EXISTING

This Standard Plan was developed for use on public works projects in the City and County of San Francisco, and shall not be used without consulting a Registered Professional Engineer. The Department of Public Works reserves the right to make revisions to this Standard Plan at any time.

NO.	DATE	DESCRIPTION	BY	APP.

REFERENCE INFORMATION
& FILE NO. OF SURVEYS



BUREAU OF ENGINEERING
DEPARTMENT OF PUBLIC WORKS
CITY AND COUNTY OF SAN FRANCISCO

REVIEWED:	DATE:
PR	10/01/06
DRAWN:	DATE:
GY	10/01/06
CHECKED:	DATE:
EK	11/01/06

PLANS APPROVAL DATE:	APRIL 30, 2007
SECTION MANAGER	4/27/07
DEPUTY BUREAU MANAGER	4/30/07
BUREAU MANAGER	

STANDARD PLAN
STREETS AND HIGHWAYS
STANDARD TRAFFIC AND CENTER ISLANDS

OLD FILE NO.
LL-24,457
FILE NO.
87,172
REV. NO.